

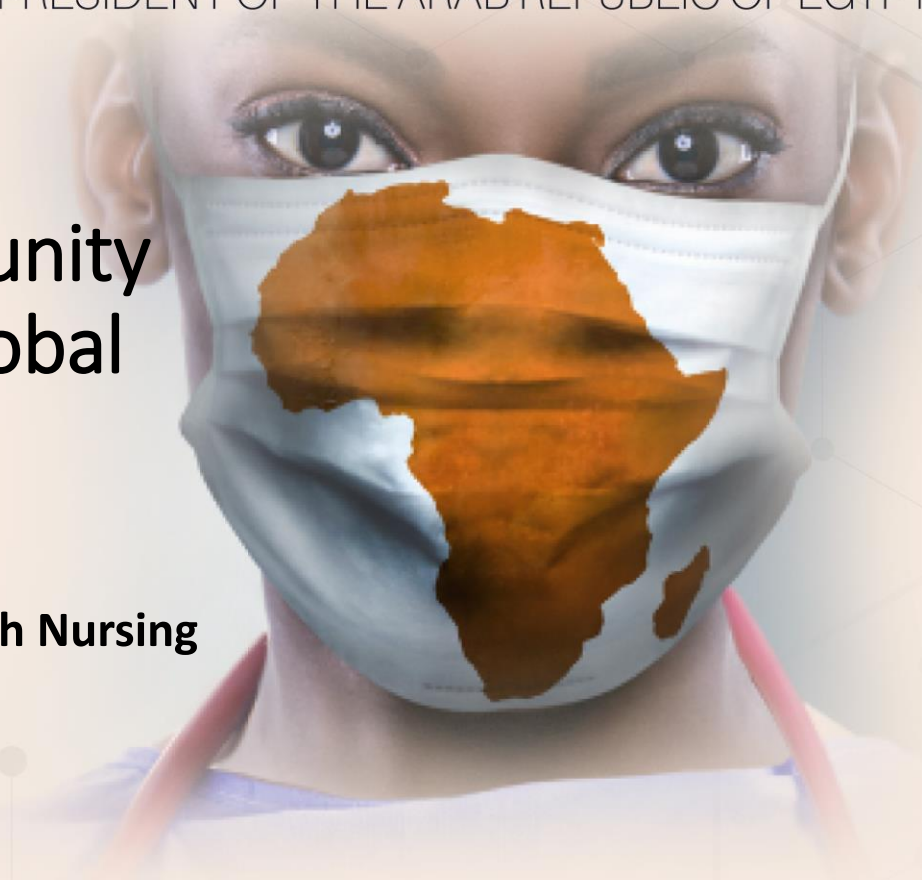


UNDER THE AUSPICES OF H.E.
ABDEL FATTAH EL-SISI
PRESIDENT OF THE ARAB REPUBLIC OF EGYPT

Empowering Advanced Community Health Nursing Practice for Global Health Transformation

Dr. Eman Ali Sheha

**Assistant professor of Family and Community Health Nursing
Faculty of Nursing - Damietta University**



Endorsed by



Scientific Conference

POWERED BY



MANAGED BY



03 - 06 JUNE 2024
EGYPT INTERNATIONAL EXHIBITION
CENTER - EIEC, CAIRO - EGYPT .

Organized by



Presentation Axes

01

Introduction

02

Advanced
Community health
Nursing Practice

03

Global Health
Transformation

04

Conclusion
and
Recommendation





Introduction



Advanced Practice Nursing (APN)

International Council of Nurses (ICN) define APN is a registered nurse who has acquired the **expert knowledge** base, complex **decision-making** skills, and **clinical competencies** for expanded practice. Three core characteristics of roles: Graduate education, more autonomous and independent advanced practice role and authority to ordering tests, interpreting results and making diagnose, treat, and prescribe medications. This role shaped by the country.

Nursing empowerment is the ability to effectively motivate and mobilize self and others to accomplish positive outcomes in nursing practice and work environment.



Universal Health Coverage and Sustainable Development Goals

Goal 3: Ensure healthy lives and promote well-being for all at all ages

SDGs make a bold commitment to end the epidemics of communicable diseases by 2030.

(UHC) aims to ensure that everyone can access quality health services without facing financial hardship

They are a clarion call for countries to:

Strengthen their health systems

Establish new models of care

Build advanced community nurse Capacity.

Recognize that the advanced nurse can provide health care for all populations and in all settings.



02

Advanced Community Health Nursing Practice



Advanced Public/Community Health Nursing Practice

Seek to apply advanced a synthesis of nursing and public health knowledge and skills to maintain and improve the health of communities.

Focus on

Community or Populations

Prevention of Disease and Injury

Health Promotion

Comprehensive Care for a Community's Health

In recent years
the paradigm of
healthcare delivery
has shifted towards
a more
community-centric
approach.



Advanced graduate education of Community health nurses are the forefront of this shift, assuming multifaceted roles that go beyond traditional nursing duties.



Scope of Advanced Community Nurse Practice

Enhanced Accessibility to Healthcare in Underserved Communities Worldwide

Improving patient outcomes

Effective leadership in Managing the Health Care Needs of Communities

Ideal provider of primary prevention as well as disease management

Emergency Preparedness and Response

Utilizing Technology

Empowering Communities and Public Health Challenges

Strengthening Health Systems

**work in
community
partnerships**

**conduct
community
assessments**

**Develop,
implement health
promotion, disease
prevention programs that
are appropriate culturally,
cost-effective**



Why we Need Advanced Community Practice Nurses?

About 4.5 billion people were not fully covered by essential health services globally.

1.5 million children under 5 years lose their lives to vaccine-preventable diseases every year globally

Nearly 3 million workers die every year due to work-related accidents and diseases globally

Over 1.5 billion people still do not have basic sanitation services as private toilets globally.

Non-communicable diseases (NCDs) kill 41 million people each year, equivalent to 74% of all deaths globally.

At least 1.7 billion people use a drinking water source contaminated with faeces globally.

24 % of all estimated global deaths are linked to the environment globally.

More than 4 billion people still lack any social protection globally

37.7 million people worldwide living with HIV

However, advanced community health nurse need to be allowed to use their maximum scope of practice to meet health care needs.



Challenges in Advanced Community Nursing Practice

Lack of Resources: Funding Constraint and infrastructure limitations

Workforce Shortages

Lack of Supportive Policies and regulation

Concerns for personal safety

Lack of Role Clarity, Title protection and Inability to sign notes

Resistance to change (Medical and Nursing)

On-call duties

**Understanding
these challenges is
crucial for
developing
strategies to
overcome them and
empower
community health
practice for global
health
transformation**



Strategies to Empower Advanced Community Nursing Practice for Global Health Transformation

Empowering Advanced community nurses Through



**Access to Resource
Allocation and
Funding**

**Collaboration and
Interprofessional Practice**

**Education and Training
(Advanced Degrees, Specialized
Training, Continuing Education)**

**Technology and Innovation
integration to enhance diagnosis,
treatment and patient engagement**

**Policy Advocacy and
Leadership roles in
community**

**Research and Evidence-
Based Practice**





Global Health Transformation



How empowering Advanced Community Nursing Practice Contributions to Global Health Transformation

Global Health Transformation refers to significant changes and advancement in health care system and practices around the world

Are closely related

**Advanced
Community
Nursing Practice**

Achieving
equitable

Sustainable

Aims to

Improved health
outcomes

Address
emerging health
threats

**a key Role
of**

It involves various Strategies, Initiatives, Policies that

Enhanceme
nt of health
systems

Reduction
of health
disparities

Reducing the
burden of
disease

Promotion
overall
well-being

Universal
Health
Coverage

Community
Engagement and
Empowerment

Investment
in research

Sharing
advanced
knowledge
and
practices

Mobilizing
resources for
global health
initiatives





Conclusion and Recommendation



Conclusion

Empowering the advanced community nursing practice
can make **a significant impact** on improving health
outcomes, promoting health **equity** worldwide and
drive toward **global** health transformation



Future Directions and Recommendations

**Investment in
education and
training**

**Global
Collaboration**

**Innovative
Solutions**
(Embracing new
methods and
technologies to
improve
community
health outcomes)

**Policy
Development**



THANK YOU



WWW.AFRICAHEALTHEXCON.COM

Endorsed by



Scientific Conference

POWERED BY



MANAGED BY



Organized by

